

COOPERATIVE CONNECTIONS



Hooked on Fishing

South Dakota Fish
Hatcheries

Pages 8-9

Methods of
Moving Structures

Pages 12-13

Photo Credit:
Markus Erk

49, 73, 87, 50, 46

Sorry, No Bingo



Valerie Marso
Office Manager

As we are gearing up for our birthday and starting to plan the annual meeting, have you ever wondered why the annual meeting number doesn't match how old we are? No? Me either. But for that and some other factoids about your electric cooperative – keep reading!

87 Years ago (1936) – The Rural Electrification Act was enacted providing federal loans for the installation of electrical distribution systems to serve isolated rural areas of the US.

77 Years ago (1946) – The board of directors of Central Electric Cooperative (AKA Oahe Electric) held their first meeting. Our Bylaws and Articles of Incorporation also came into existence. The Articles of Incorporation is the date that is used as our “birthday” on April 26.

74 Years ago (1949) – We were approved for our first loan of \$775 thousand. In today's money, that would be equivalent to \$9.5 million! This is also the year that we set our first pole.

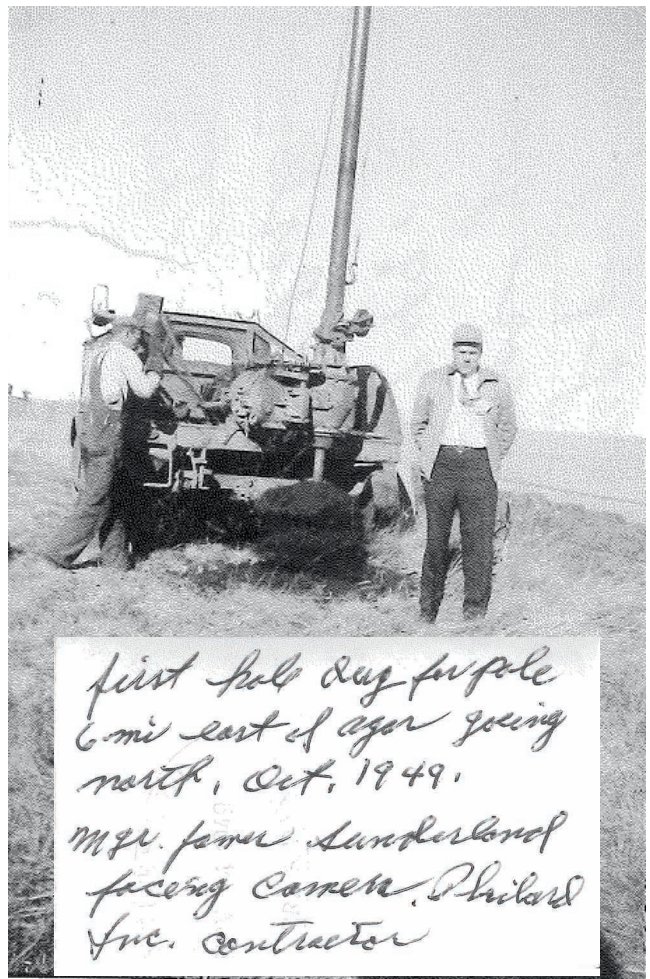
73 Years ago (1950) – Central Electric Cooperative changed its name to Oahe Electric Cooperative, Inc. Also, our first services were energized.

71 Years ago (1952) – The first issue of the *Current Reporter* (Now *Cooperative Connections*) was published. Also, the first annual meeting was held!

69 Years ago (1954) – Over four years, the cooperative had amassed 810 meters and energized 791 miles of line, which equals to 1.02 meters per mile of line. Fast forward to today and those numbers are 3,331 meters and 1,229 miles of energized line, which equals to 2.71 meters per mile of line.

63 Years ago (1960) – The headquarters building was constructed. It has been modified throughout the years but we are still in it today. Stop by and see us!

And one last bit of energy related knowledge for you: If you yelled for eight years, seven months, and six days, you would have produced enough sound energy to heat one cup of coffee – (hardly seems worth it...unless it's a Monday, of course!).



first pole dug for pole
6 mi east of agar going
north, Oct, 1949.
mgr. James Sunderland
facing camera. Philard
Inc. contractor

COOPERATIVE CONNECTIONS

OAHE ELECTRIC

(USPS No. 019-042)

Board of Directors:

James Feller – Vice President
605.962.6207
Brandon Haag – Assistant Secretary
605.215.6758
Ryan Noyes – Treasurer
605.280.3500
Ross Sperry – Secretary
605.280.7770
Kirk Yackley – President
605.258.2412

Employees:

Tyler Arbach – Journeyman Lineman
Austin Bergeson – Journeyman Lineman
Mark Bruning – Line Foreman
Matt Eldridge – Chief Operations Officer
Trudie Feldman – Custodian
Brady Gaer – Journeyman Lineman
Sidney Geigle – Journeyman Lineman
Sam Irvine – Administrative Services Specialist
Megan Jaeger – Membership Director
Les Job – Journeyman Lineman
Jordan Lamb – Chief Executive Officer
Dan Lettau – Journeyman Lineman
Steve Long – Power Supply Specialist
Valerie Marso – Chief Financial Officer
Tory Smith – Journeyman Lineman

OAHE ELECTRIC COOPERATIVE CONNECTIONS is published monthly by Oahe Electric Cooperative, Inc., PO Box 216, 102 S. Canford, Blunt, SD 57522, for its members. Families subscribe to Oahe Electric Cooperative Connections as part of their electric cooperative membership. Oahe Electric Cooperative Connections' purpose is to provide reliable, helpful information to Oahe Electric Cooperative members on matters pertaining to rural electrification and better rural living. Subscription information: Electric cooperative members devote 50 cents from their monthly electric payments for a subscription. Nonmember subscriptions are available for \$12 annually. Periodicals Postage Paid at Blunt, SD 57522 and at additional mailing offices.

POSTMASTER: Send address changes to Oahe Electric Cooperative Connections, PO Box 216, Blunt, SD 57522-0216; telephone (605) 962-6243; fax (605) 962-6306; e-mail oahe@oaheelectric.com; www.oaheelectric.com

Our Mission

Oahe Electric delivers high quality, low-cost electric service to our local member-owners. As a Touchstone Energy® Cooperative, we are committed to meeting the highest standards of customer satisfaction. We do business with accountability, integrity, innovation and commitment to community. As an electric co-op, we are part of America's most trusted network of high quality energy providers.

National Lineman Appreciation Day

Tuesday, April 18 is National Lineman Appreciation Day! Hurricanes, ice storms, and other devastating natural disasters certainly put the spotlight on the nation's power lineworkers. We're grateful to the courageous, hardworking men and women who work tirelessly to restore service following these difficult events, as well as their daily work to keep power flowing. Oahe Electric is proud to celebrate the hard work, innovation, and dedication of our linemen! #ThankALineman



Austin Bergeson (Journeyman Lineman), Steve Long (Power Supply Specialist), Tyler Arbach (Journeyman Lineman), Sid Geigle (Journeyman Lineman), Brady Gaer (Journeyman Lineman), Tory Smith (Journeyman Lineman), Dan Lettau (Journeyman Lineman), Mark Bruning (Line Foreman), and Les Job (Journeyman Lineman).

Help Wanted

Oahe Electric needs assistance with keeping our rock beds and landscaping in tip-top shape this summer. We are looking for a hardworking group or individual who will periodically weed the areas around our headquarters. Please contact us at 1.800.640.6243 or oahe@oaheelectric.com with a proposal for yourself or your group.

Statement of Non-Discrimination

In accordance with Federal civil rights law and U.S. Department of Agriculture (USDA) civil rights regulations and policies, the USDA, its Agencies, offices, and employees, and institutions participating in or administering USDA programs are prohibited from discriminating based on race, color, national origin, religion, sex, gender identity (including gender expression), sexual orientation, disability, age, marital status, family/parental status, income derived from a public assistance program, political beliefs, or reprisal or retaliation for prior civil rights activity, in any program or activity conducted or funded by USDA (not all bases apply to all programs). Remedies and complaint filing deadlines vary by program or incident. Person with disabilities who require alternative means of communication for program information (e.g., Braille, large print, audiotape, American Sign Language, etc.) should contact the responsible Agency or USDA's TARGET Center at (202)720-2600 (voice and TTY) or contact USDA through the Federal Relay Service at (800)877-8339. Additionally, program information may be made available in languages other than English. To file a program discrimination complaint, complete the USDA Program Discrimination Complaint Form, AD-3027, found online at http://www.ascr.usda.gov/complaint_filing_cust.html and at any USDA office or write a letter addressed to USDA and provide in the letter all of the information requested in the form. To request a copy of the complaint form, call (866) 632-9992. Submit your completed form or letter to USDA by: 1.) mail - U.S. Department of Agriculture, Office of the Assistant Secretary for Civil Rights, 1400 Independence Avenue, SW, Washington, D.C. 20250-9410; 2.) fax: (202) 690-7442; or 3.) email: program.intake@usda.gov. USDA is an equal opportunity provider, employer, and lender.

Practicing Electrical Safety Inside and Outside the Home

Electricity is a vital resource South Dakotans depend on daily, but when used unsafely, the consequences can be costly and sometimes even deadly.

Many tragedies involve common items such as power outlets, appliances, power cords, power equipment and extension cords. Sadly, most of these deaths and injuries are preventable.

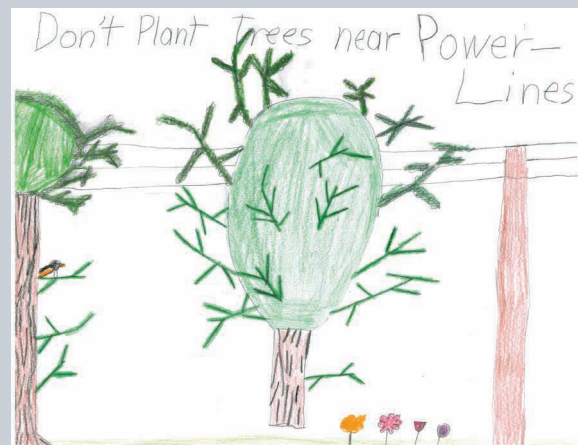
To help reduce electric safety casualties and injuries, South Dakota's electric cooperatives are dedicated to raising awareness of electric safety information to educate people of all ages on the dangers of electricity.

Inside the Home:

- Inspect electrical cords often for broken connectors or fraying. Throw away any worn cords to eliminate the possibility of shock, short circuit or fire.
- Don't overload power outlets.
- The wattage of the bulbs you use in your home should match the wattage indicated on the light fixture. Overheated fixtures can lead to a fire.
- When trying to unplug something from an outlet, pull on the plug, not the cord.
- Keep in mind that turned off appliances are still connected to electricity until they are unplugged. Always unplug appliances before cleaning or repairing.
- Use extension cords only for short-term purposes, and make sure the cord is adequately suited for the amount of electricity it will be transferring.
- Turn off and unplug all portable electrical appliances, like hairdryers, irons and shavers, when you're finished using them.
- Be familiar with the location of your breaker box and make sure the switches are clearly labeled so you can shut off electricity quickly in the event of an emergency.
- Teach children never to put their fingers in electrical outlets and appliances.
- Keep appliances and cords away from children and use plug covers in outlets.

Outside the Home:

- If there is a downed power line nearby, leave the area immediately and notify your cooperative or call 911. If others are around, let them know that they need to stay away.
- Teach children to stay away from power lines and substations and make sure they can recognize "Danger-High Voltage" signs.
- Never use electrical equipment near any wet areas, such as pools or ponds.
- Remember, electricity looks for the shortest, most direct path to ground. A ladder, pole or even a wet kite string touching a power line will give electricity a new, shorter path and if you are holding one of these items, you could become a part of that path.
- "Call Before You Dig." Dial 811 before starting a digging project, and workers will be sent to your home to mark utility lines in your yard. This service is free, and it has the potential to save your life.



Power Line Safety

Annette Tschetter, age 9

Annette Tschetter, age 9, offers a great safety tip for power lines. Planting trees near power lines can be dangerous and problematic. Annette is the daughter of Ryan and Elaine Tschetter, members of Whetstone Valley Electric based in Milbank, S.D.

Kids, send your drawing with an electrical safety tip to your local electric cooperative (address found on Page 3). If your poster is published, you'll receive a prize. All entries must include your name, age, mailing address and the names of your parents. Colored drawings are encouraged.

SMOOTHIE SENSATION



WAKE UP COFFEE SMOOTHIE

Ingredients:

- 1 cup milk
- 1/8-1/4 cup instant coffee granules
- 1 envelope chocolate or vanilla instant breakfast drink mix
- 3 cups ice cubes

METHOD

In a blender, combine all the ingredients except the ice. Blend until well mixed. Add the ice and blend until well mixed and slushy.

Catherine Peterson
Viborg, S.D.

STRAWBERRY SMOOTHIE

Ingredients:

- 2 cups fresh strawberries, stemmed and halved
- 1 cup plain yogurt
- 1/2 cup ice cubes or chips
- 1/2 tsp. ground cardamom
- 1/4 tsp. ginger

METHOD

In a blender, combine all of the ingredients. Blend on high speed until it has a smoothie texture. Makes two 12 ounce glasses.

Dar Duncan
Milbank, S.D.

MINT CHOCOLATE BREAKFAST SMOOTHIE

Ingredients:

- 1 cup ice
- 1/2 medium avocado, peeled, pitted and chopped
- 1/2 cup frozen sliced banana
- 1/2 cup packed baby spinach leaves
- 1/2 cup reduced fat milk
- 1 tablespoon agave nectar
- 1/2 teaspoon Pure Vanilla Extract
- 1/4 teaspoon Pure Peppermint Extract
- 2 tablespoons finely chopped chocolate

METHOD

Place all ingredients except chocolate in blender container; cover. Blend on high speed until smooth. Stir in chocolate. Serve immediately.

mccormick.com

Please send your favorite recipes to your local electric cooperative (address found on Page 3). Each recipe printed will be entered into a drawing for a prize in December 2023. All entries must include your name, mailing address, phone number and cooperative name.

Sign Up for Auto Pay and Win \$50

Auto Pay

Are you interested in making your life easier and maybe putting some extra cash in your pocket? Sounds like a dream, right? Make this dream a reality by signing up for auto pay for your electric bill and you will be entered into a drawing to receive \$50!

With the automatic bill payment plan, you won't have to spend time writing or mailing checks. Plus, your bill will be paid on time, even when you are on vacation. Actually, paying your utility bill won't take any time at all! Each month, the amount due for your electric bill will be paid automatically from your checking/savings account or credit or debit card. The payment will be listed on your monthly account statement and on your next bill from Oahe Electric.

Members who have already discovered how easy auto pay is have already been entered in to a separate drawing for a chance to win \$50! No additional work required! This is just our way of saying thank you for participating in the program.

SmartHub and Online Bill Pay

You can also view and pay your bill online the day they are generated. Oahe Electric Cooperative, Inc members have the opportunity to view their bills online. Subscribers are able to sign up to receive an e-statement and access our new account management tool by going to our website – www.oaheelectric.com, clicking on the

Payment Options box and then on the SmartHub link. Once you have registered as a new user, you can easily access your account. The SmartHub option offers features such as viewing previous month's bills, downloading billing data, payment history and paying your bill via credit card. You can also sign up for automatic payments on SmartHub. You will still receive a paper statement unless you request otherwise. When the new bills are calculated for the month (around the 10th), you will receive notification via e-mail that your new account information is available online.

Budget Billing

Discover the convenience of having 12 equal monthly payments for your electric bill. The sign-up months for budget billing are May and June. If you would like more information, would like to sign up or if you would like to have your budget bill amount calculated, please call the office at 1-800-640-6243.

Auto Pay, SmartHub/Online Bill Pay and Budget Billing are just a few ways to make bill paying more convenient – use them together or separately. Just fill out the form below and return it to Oahe Electric, PO Box 216, Blunt, S.D., 57522 by **May 27, 2023**, to have your electric bill deducted from your checking or savings account and for your chance to win \$50!

(Please Print)

Since your electric bill will vary in amount, Oahe Electric will send you a statement showing the amount to be deducted from your account. The deduction will occur on the 20th of each month or the closest business day if the 20th falls on a weekend or holiday. Automatic bill payments will commence the month following receipt of this form.

Name _____

Address _____

Daytime Phone _____

Member Account Number(s) _____

(List all account numbers you want paid automatically)

Please deduct my Automatic Bill Payment from my:

Checking Account (or) Savings Account (or) Credit/Debit Card

Be sure to include a voided check with this form.

Bank Account Number _____

Bank Name _____

Bank Address _____

Bank Phone Number _____

Bank Routing Number _____

OR

Type of Card Used for Payment: Mastercard (or) Visa (or) Discover

Card Number: _____ Exp. Date: _____

I hereby authorize Oahe Electric Cooperative, Inc. to deduct my utility payment(s) from the checking/ savings account or Credit/Debit card listed above. I understand if at any time I wish to discontinue this service, I will notify Oahe Electric.

Signature _____

Date _____

Small Change Can Make a BIG Difference

What is Operation Round Up? Operation Round Up® is just what the name implies: each month, Oahe Electric Cooperative, Inc. simply “rounds up” the electric bills of voluntarily participating members to the next highest dollar. For example, a member’s monthly bill of \$132.68 would automatically be rounded up to \$133, with the additional 32 cents going to the Operation Round Up Fund.

How do I participate? Oahe Electric’s Operation Round Up® program is an opt-out program – meaning that you are automatically enrolled, with nothing else needing done to participate! If you have not interested in donating, you can call the office at 1-800-640-6243 and request to be removed from the program.

How much will it cost members? The most a member can contribute is 99 cents per month x 12 months = \$11.88/year – this doesn’t sound like much, but with this small change, thousands of dollars can be generated and will mean a big difference to the people and organizations in our area.

Where will the money go? All Operation Round Up® donations are placed in a trust and are administered by an independent Board of Trustees. The board is made up of community leaders who serve on a voluntary basis. The board evaluates all requests for funds, determines who will receive funding and how all Operation Round Up® funds will be distributed.

Who is eligible for funds? The funds are used to address charitable community needs, whether it is disaster relief for an individual, or an organization funding a special project. Since the program’s first disbursement in 2009, the program has distributed over \$108,000. The region served by the fund is primarily the electrical area served by Oahe Electric Cooperative, Inc., including Hughes and Sully counties.

How do I apply for funds? The easy-to-complete applications for funding are currently available and can be requested by phone at 605-962-6243. Applications can also be found on our website at

www.oaheelectric.com. All applications are due by **April 30, 2022**. Completed applications may be mailed to: Oahe Electric Cooperative, Inc., P.O. Box 216, Blunt, SD 57522, faxed to: 605-962-6306, or emailed to: oahe@oaheelectric.com. After the deadline, the Board of Trustees will meet and allocate the funds to those they feel are in the most need.

How do I get involved? There are currently two, five-year Board of Trustees position openings. Trustees normally have to commit one afternoon a year to review fund request applications in person, with the possibility of correspondence regarding emergency fund requests throughout the year. If you are interested in offering your time to this endeavor, please contact Samantha Irvine, Operation Round Up Coordinator, at 1.800.640.6243 or oahe@oaheelectric.com.

Together, by giving a few cents each month, Oahe Electric members can make a big impact on life in our area!

Employees Receive CPR and AED Training

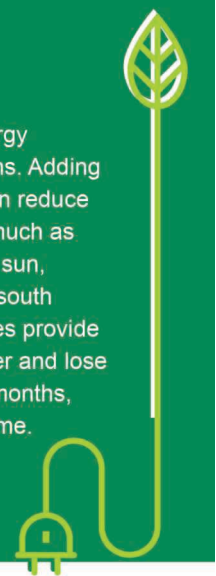
In February, Oahe Electric employees were certified in CPR and First Aid. Oahe Electric provides CPR and AED training every year, and first aid training every other year, to keep employees up-to-date on any procedure changes.

This is also a good opportunity for Oahe Electric to remind the community of Blunt and the surrounding area that there is an AED in our social room that is available during business hours (Monday-Friday, 7:30 a.m.-4 p.m.) for any resident that may have need of it.

Energy Efficiency Tip of the Month

This planting season, include energy efficiency in your landscaping plans. Adding shade trees around your home can reduce surrounding air temperatures as much as 6 degrees. To block heat from the sun, plant deciduous trees around the south side of your home. Deciduous trees provide excellent shade during the summer and lose their leaves in the fall and winter months, allowing sunlight to warm your home.

Source: energy.gov



HOOKED ON FISHING

A Game, Fish and Parks employee consolidates fish in a raceway at McNenny State Fish Hatchery for loading and stocking.

South Dakota Fish Hatcheries Meet Growing Demand

Frank Turner

frank.turner@sdrea.coop

Fishing guide Dave Spaid, of Pierre, has a passion for helping anglers pull fish out of South Dakota waters. When a customer catches a memorable monster along the banks of the Missouri River, Spaid knows he has had a successful day.

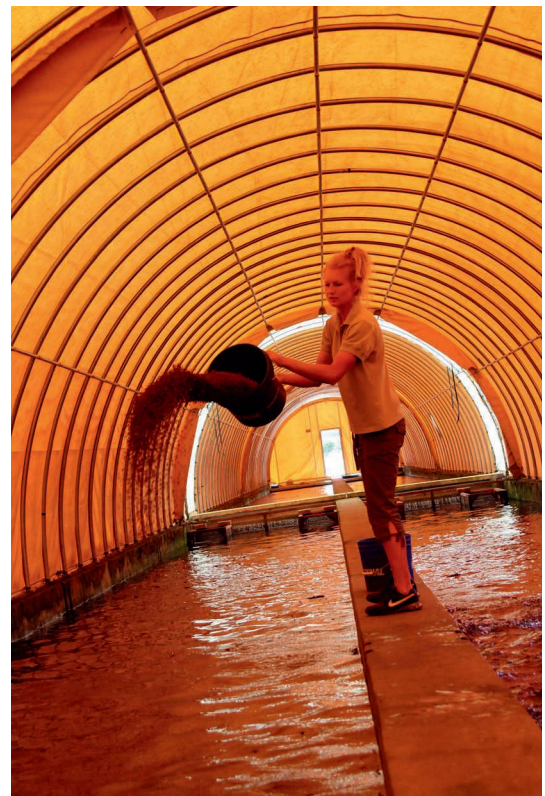
“I basically enjoy watching other people catch fish,” said Spaid, who has been a guide for fishermen from across the Midwest for more than 37 years.

Over the course of his long-standing career, Spaid says he observed more anglers on the water and improved fishing technologies and capabilities, yet fewer sizable fish. “There’s a growing amount of people out there that are fishing every day and having success,” said Spaid. “It puts a detrimental dent in our fishery and sometimes the fish just don’t have a

chance to grow to those bigger sizes.”

According to data from Game, Fish and Parks (GFP), fishing continues to be an important part of South Dakota’s outdoor heritage, confirming Spaid’s suspicions. And while fishing guides, like Spaid, have earned a living by taking fish out of the water, managers of fish hatcheries have taken on the responsibility of putting new fish back in.

Fish Hatcheries administrator Mike Barnes said GFP is being proactive in the development of its three hatchery locations to meet the needs of South Dakota’s anglers. Recent improvements to South Dakota’s three hatcheries located in



Regular feedings help bolster fish before their introduction to South Dakota lakes and rivers.

Spearfish, Rapid City and Waubay have significantly improved the state's abilities to produce and rear mass quantities of fish – everything from walleye to rainbow trout to largemouth bass – for stocking across the state.

The fish produced at these state hatcheries can even bolster South Dakota's larger fisheries, and without them, there would be significantly fewer fish to catch. In 2022, GFP and other entities stocked a total of 66 million fish, including 19 different species, in 138 lakes and streams in South Dakota. Over 60% of the walleye fisheries in South Dakota depend on stocking, and walleye stocking is increasing in Lake Oahe, South Dakota's largest reservoir. Other fisheries, like those for Chinook salmon, rainbow trout, and paddlefish, only exist because of hatcheries.

So how does the state manage to raise millions of fish? When raising walleye, hatcheries collect and fertilize fish eggs collected during the spawning season in the spring. The eggs incubate in upwelling jars, which circulate fresh water and gently roll the eggs. When the eggs hatch,

the small fry are either stocked directly into lakes or kept for further growth in ponds or newly installed re-circulating aquaculture system (RAS) tanks.

Due to the recent addition of RAS technology in 2019, Barnes said it is now possible to grow more fish and different species of fish to sizes never before possible. "Anglers are going to feel a huge impact from what we have done with these new systems, even as soon as this summer," said Barnes. "We are increasing small walleye production, and will be stocking bass at 10 inches or bigger, bluegills at eight inches, and muskies at 16 inches or longer – we've never had the opportunity to grow and stock these species of fish at these sizes before. This is all happening at the same time as increased numbers of walleyes returning from traditional rearing ponds and trout production at record levels. I'm extremely proud of the people I am privileged to supervise."

Rearing fish in RAS is complex, and Barnes compares the process to a factory. The scale of production is massive and energy intensive. Barnes is also the

manager of McNenny Hatchery in rural Lawrence County. As a co-op member of Butte Electric, Barnes said the McNenny hatchery in Spearfish has had consistent support from its local co-op to keep the operation rolling.

"There is no way we could do what we do without reliable electricity," said Barnes. "It's just a tremendous blessing for us to have Butte Electric as our provider. They are just so good to work with and so responsive and helpful."

The state is keen on keeping the momentum rolling. In fact, GFP has plans for a new hatchery facility on SDSU's campus. Increasing production, increasing rearing efficiencies, saving money, developing student interns, and enhancing fisheries education, are all reasons for the new facility. Barnes estimates that the project could be completed within the next three years.

"Keep an eye out for new projects because they are happening and underway," he said. "And at the end of the day, it's all about maximizing the satisfaction of our customers, South Dakota's anglers."



Game, Fish and Parks uses trucks equipped with livewells to stock fish directly into South Dakota fisheries across the state.

We Need Your Help

Oahe Electric's Outstanding Capital Credit Checks

Please notify Oahe Electric Cooperative, Inc., in Blunt, S.D., at 1-800-640-6243 if your name is on this list and you did not receive or have misplaced your check. If you know someone on this list, or their personal representative, please have them contact Oahe Electric. This institution is an equal opportunity provider and employer. Please refer to SDCL 47-16-54 through SDCL 47-16-57 for unclaimed capital credit forfeiture procedures.

ACKERT, CARMEN AND SCOTT	CAMPBELL, SONJA	FAWCETT, JEREMIAH AND JESSICA TYLER	JOHN WEST	MAHOWALD, DOUG
AGNEAU, WINSTON	CAMPBELL, STEVEN AND AMANDA SARVIS-CAMPBELL	FINLEY, H JAMES	JACOBS, JEFFREY	MANNIE, DELARE A. ESTATE C/O MATT OR KIM MANNIE
AMSDEN, JOANNE	CARLTON, MICHAEL	FIRE CLOUD, TRAVIS	JACOBS, VALERIE G	MANNING, SCOTT AND MINDY ALLUM
AMSDEN, JOHN	CARPENTER, JAMES M	FRANKE HARVESTING C/O CHARLIE FRANKIE	JOHNSON, JEFF L ESTATE	MANZ, PAUL AND MARGARET
ANDERSON, JOHN AND MEGHAN	CHRISTOPHERSON, DAVID	FROST, JEREMEY AND SHERRY	JONES, CHARLES H AND MICHELE M	MANZ, ROBERT P ESTATE
ARHCER, DWAYNE ESTATE C/O LEONA ARCHER	CLARK, ZACK	GARRETT, CARLIN ESTATE	JONES, TREVOR AND WENDY	MARSH, WILLIAM AND JAMIE
ASHLEY, MARY	CLINCH, MICHAEL J	GARRIGAN'S LANDING C/O JACK GARRIGAN	JOST, MARTI	MARTIN, SAM
ASS KICKIN' RANCH LLC C/O JEFFREY JACOBS	CONNECTICUT MUTUAL LIFE INSURANCE CO.	GARRETT, RONALD J	JPD LLC C/O JAYME DEIS	MCCARTY, CHRISTOPHER
AUTHIER, PHILIP AND KAREN	COWAN, CHAD AND JESSICA	GAVIN, STACEY	JUTILA, VERNON A AND ANNETTA L	MCCOMSEY, GARY A AND RHONDA
AUTUMN ENTERPRISES INC C/O MARTY VANDENEYKEL	CROW CREEK TRIBAL SCHOOL	GEFFRE, RICHARD	KELLEY FAMILY INC	MEHRER, DAVID AND JEAN
AXDAHL, LEE	CRESSY, CHRISTOPHER	GINGRICH, ZACH	KENYON, CASEY AND CHRISTINA	MERRILL, KEITH B ESTATE
BAADE DARRELL ESTATE, AND JANET	CURRY, MONTE AND KITTY L C/O KATHY SARVER	GOODMAN, ALVIN	KESSLER, ROBERT J	MEYER, STEVEN J
BARNES, PIERRE ESTATE	DARRINGTON, DENNIS H AND DONNA	GOOSEN-GOERTZ, BONNIE J	KILLINGSWORTH, EARL E AND DEBBIE	MIDDLETON, BRADLEY J
BENNETT, MERLIN O AND SUSAN	DEAN, TERRY	GRAF, KARL L AND GLEN E	KLEIN, MATHIAS AND KATE	MIDWEST FEEDERS INC
BERGESON, BECKY	DENNIS, PAUL ESTATE	HALL, CODY AND JACQUE	KUHL, JACK AND SUE	MILLARD, ALVIN D ESTATE
BERRY, MAVIS L	DEYONGE, WILLIAM	HALL, HALONA M ESTATE	KUHRT, BERNELL F AND DORIS	MILLER, ALLEN D AND XU ZOU CHEN
BIEBER, BROOKE	DIEDRICH, RANDY	HALL, TYREL	KUIPERS, BRAD AND MANDY	MILLER, DUANE R
BINKLEY, RICHARD ESTATE AND ESTHER	DM&E RAILROAD CORPORATION	HARTL, MONTE R AND DAWN	LAMBIE, DARRELL ESTATE	MILLER, JOHN E
BISHOP, THOMAS C	DOCKTER, VERNIE	HARVEY, SHANE AND SHARON	LARSEN, RAYMOND AND ANN	MISTEREK, THOMAS J ESTATE AND TIM MISTEREK ESTATE
BOYD, SHANE ESTATE	DOERR, DENNIS ESTATE C/O B&C DOERR LLC	HEASLEY, TRAVIS AND JILL	LARSON, DONLEY W ESTATE AND ELIZABETH ESTATE	MITCHELL, BOB AND EMILY TOWNSEND HILL
BOYLES, CHARLES A ESTATE	DOERR, NOEL ESTATE	HERALD, JODDIE	LEACH, ROBERT W AND DIANN L	MORGAN, DAVID F
BOYS & GIRLS CLUB OF THREE DISTRICTS C/O RONDA HAWK	EDWARDS, CHARLES AND MARILYN	HILL, LAMONT D ESTATE C/O JODY HILL	LEBEAU, MICHAEL	MORGAN, VICKI H
BREWER, ROBERT W	EICH, FRANK	HOBERT, RITA ESTATE	LEFT HAND BULL, ETHEL ESTATE	MORRIS, TOBIN J AND JAMIE
BROOKINGS, JAMES E SR ESTATE	ELTON ELLER INC	HOERNER, PAUL AND BRANDI	LEWIS, JAMES J	MUNTEFERING, CHAD AND KERI
BRULL, DELORES	ENCALADA, MADELINE AND JAIME	HOLZWARTH, JIM	LEWIS, LARUA A	MURPHY, THOMAS J
BUCHHOLZ, PETER J. ESTATE	ENGELMANN, DONALD L	HUBER, KIM ESTATE	LINDBLOOM, ANDREW AND REBEKEH	MUSICK, ROY ESTATE
BUNN, CAREY	EPP, JOSE AND REBEKAH	HUGHES, DOUGLAS Q	LONG, DAREN AND LISA	MYERS, RALPH A ESTATE
BURGHER, CHANDRA AND BRET	ERICKSON, ALBERT ESTATE	HUNSLEY, LYLE E ESTATE AND ANNIS	LOVELL, BLANCHE ESTATE	NAUGHTON, DAVID
BURKE & ASSOCIATES	EVANS, ERNEST R AND GENEVIEVE M	HUNSLEY, NANCY	LUCERO, ISAAC AND KEELY VINCENT	NAUMAN, PATTI
BURKE RE LLC C/O BOB BURKE	FALKENHAGEN, KENNETH ESTATE C/O EDIE FALKENHAGEN	HUSE, MICHALA	M&R RAUSCH FARM C/O MICHAEL R OR ROBERT J RAUSCH	NEWLING, BENJAMIN AND SKYE SHARKEY
BURNHAM, HAROLD	FARM AND RANCH SOLUTIONS C/O LUCAS SOLBERG	HUSE, CHRIS ESTATE	MACLEOD, BARRY	NOLTE CONSTRUCTION AND STEVE NOLTE
		INTEGRATED TOWER NETWORKS INC C/O DAN KORUS		NORDSTROM, ERIC
		IVERSEN, HEATHER AND FRANCIS		NPP LLC
		J&J CONSTRUCTION C/O		

- | | | |
|---|--|---|
| OAHE PLAINS SYSTEM CORP | SCHROER, JUNE ESTATE AND JAMES SCHROER | TCHIDA, JOSH AND JERUSHA |
| O'DAY, JERRY ESTATE | SHEPHERD, JEREMY AND NANETTE | TELFORD, LORETTA J ESTATE |
| OLSON, AMBER | RODDEWIG & SON C/O CJ OR CURTIS RODDEWIG | THOMPSON, BARRY |
| OLSON, CHARLES J | RUSSELL, SHANNON ESTATE | THOMPSON, PAUL AND CONNIE |
| ONDELL, RAY AND LINDA | SAND LIVESTOCK ASSOC 1986-1 AND CHUCK SAND ESTATE | THOMSEN, AL ESTATE C/O LINDA KING |
| ORGANA CORP C/O PATRICK MILLER | SCHMITZ, MARC AND AMY | TODD, ANTON ESTATE C/O GRACE TODD |
| PARK APTS - AGAR | SCHROYER, GERALD ESTATE AND ARTALEE ESTATE C/O JOHN SCHROYER | TOUCHE, DON P |
| PARK, PHILLIP | SCHUMACHER, ERVIN AND GERTRUDE | UNSER, KEVIN J |
| PAULSEN, BRAD | SEALS, RODNEY | VILHAUER, DAVID ESTATE |
| PEASE, MICHAEL D ESTATE | SHULTZ, ELEANOR ESTATE | VOTAVA, JEANIE |
| PERFORMANCE AGRICULTURE | SLAMA, RANDY AND DAWN | W W BUNK GERLACH ESTATE C/O MARY ALLEMAN |
| PETERSON, JEAN | SMITH, ALEX ESTATE | WARNICK, CHRISTINE M |
| PIERRE CONCRETE C/O DON CHRISTIANSEN | SMITH LAND TRUST C/O CONNIE MIKKELSEN | WEGNER, DANNY AND MARGARET |
| POKORNY, RYAN E AND MARIAH | SMITH, RICHARD N | WEINHEIMER, JEFF |
| PREISER, SHEILA | SOMMER, SUE ESTATE | WEINHEIMER, KENNETH |
| PUDWILL, FRED | SPAID, RUSSELL AND CANDY | WEINHEIMER FARMS INC C/O KEN WEINHEIMER |
| QUICK, CHRISTOPHER | SPIES, JAMES C AND FRANCENE | WEINHEIMER INC C/O KEN WEINHEIMER |
| QUINCY JOHNSON INC. C/O BRIAN OR HOLLY JOHNSTON | STAMPE, GENE W AND DARLENE | WHITE MOUNTAIN, HOKSILA AND MEMORIE TRAVERSIE |
| RAMSDELL, DANIEL | STANLEY, MIKE AND KAYLA | WILLIAMS, WAYMON |
| RAMSEY, DAVID | STEPHENS, DENNIS | WISEMAN, BRYAN AND ANN |
| RAPP, NICOLE | STEWART FARMS C/O VAN STEWART | WOODS, GORDON AND DAWN |
| REALTY CENTER OF SIOUX FALLS C/O MARGUE FRENNER | STICKNEY, ROBERT W | YAGER, GREG |
| REDDEN, OLIVER | STORMS, LINUS ESTATE | YOUNG, RON L |
| REEVES, ERIC | SUNSET LODGE C/O LARRY PAULSEN | ZACKERY, KANDI M AND CORY BURTMAN |
| RICHARDSON, CHARLES JR. AND ALLISON | SWIDEN, CHRIS AND HAYLEE | |
| RIEDEL, DUANE | TAYS, MATTHEW J | |
| RIVENES, MARVIN G ESTATE | | |
| ROBINSON, BILL | | |
| ROTH, LOUI ESTATE AND LEANN WAY | | |

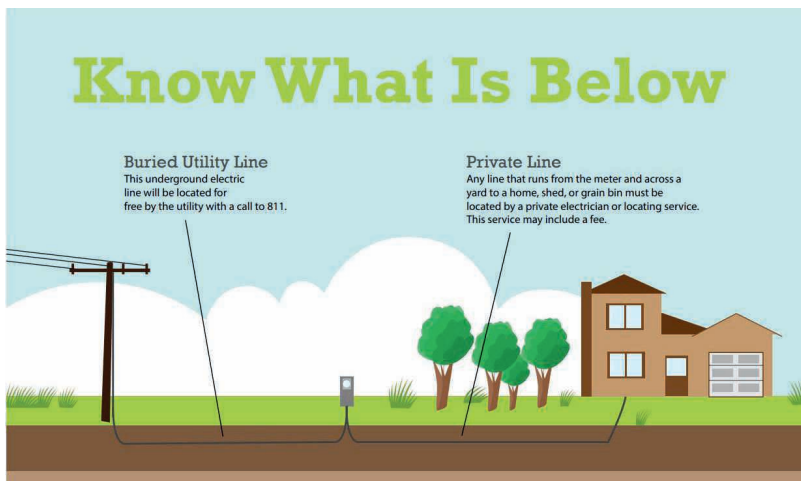
Primary vs Secondary Lines

Oahe Electric is a member of South Dakota One Call, a communication link among utilities, contractors, and private individuals who work with or around underground lines or pipes. If you plan to dig a hole or trench more than a foot deep on your property, you must phone South Dakota One Call (811) at least 72 hours before you plan to excavate. They have up-to-date records on electric, gas, phone and other utilities. They can help you avoid loss of service by accidentally severing one of these lines or pipes. Your call may also avert a possible serious incident.

Primary vs. Secondary Lines

When requesting an underground locate, please be aware of the difference between primary and secondary lines.

- **Primary lines** are the lines owned and maintained by Oahe Electric that lead up to your meter. These lines are located for free and maintained at the cost of the cooperative. These lines are located by calling 811.
- **Secondary lines** are lines after the meter that lead up to your home, shed, barn, wells, etc. The member owns these lines, and these lines are located and repaired at the cost of the member. In order to locate secondary lines, a member will need to hire an electrician. Oahe Electric does not have the equipment to locate these lines.





MOVING STRUCTURES

A home is moved in Fargo, N.D., due to flooding.

Reasons to Move and Methods to Get it Done

Jocelyn Johnson

jocelyn.johnson@sdrea.coop

You found your dreamhouse. It's affordable and everything you ever wanted. The catch? You must move it across town.

It's not an easy thing to do, but moving a complete structure from the past to its future home can be done and is done for the right reasons.

Milbank House Movers, Inc., located in Milbank, S.D., has been in business since 1965 and serves all of South Dakota, North Dakota, and the Mid-Western parts of Minnesota.

Josh Wendland from Milbank House Movers said, "The demand for moving structures remains high across all of our service area...we have multiple crews, that, at times, move multiple houses every week."

A house, sentimental barn or historical

church are all structures that people have moved in South Dakota. Sentiment, safety, time, cost, convenience, and restructuring could all be reasons why this occurs.

Throughout the United States,

intimidating structures are moved regularly – lighthouses, hotels, movie theatres, airport terminals, barges, ships, bridges, grain elevators, houses, libraries, transformers, draglines, and viaducts are a few examples.

"Relocating structures is the world's oldest and largest recycling industry," Wendland stated. "Why people move structures varies greatly, but a few of the most common reasons occur in a



Two buildings are moved from Augustana University campus due to expansion of the college athletics complexes.

vast state like South Dakota. People that would like a home built may have difficulty finding builders that will work in their parts of the state, or the local builders are simply booked out and cannot help in the timeframe that works for them.”

In these circumstances, ready-built companies offer pre-built homes that could be moved to the customer’s site and set it on their basement as if it were built there all along.

A homeowner wanting to upgrade homes in their current location while also wanting to make a profit over the home they currently live in, is another example to move a home. Out with the old and in with the new! This philosophy can be true with barns, buildings, garages, and other types of structures that are in the way of new opportunities, but still hold value.

Flooding is an additional reason why some in the Midwest may want to move their homes to higher ground. Wendland observed that structural movers have seen an increase in the number of requests to elevate houses permanently, so owners

would not have to pay for expensive flood insurance. This move would elevate the long-term value on their home.

“We also work with numerous historical societies to help preserve historic structures, trains, churches, hotels, and schoolhouses by moving them to historical society grounds where they can be saved for future generations to learn from and enjoy,” Wendland stated. “We like to say, Moving the Past to the Present for the Future!”

Things to Consider When Moving a House

Despite professionals making it look somewhat easy, getting from Point A to Point B may not be that simple. It requires constructive planning and forethought. The following are just a few considerations to take before any structure is moved.

1. Size – the bigger the house, the more expensive it is to move.
2. Obstacles – trees, overhead utility lines, bridge weight limitations, traffic signals, and railroad crossings should be considered

with every route taken.

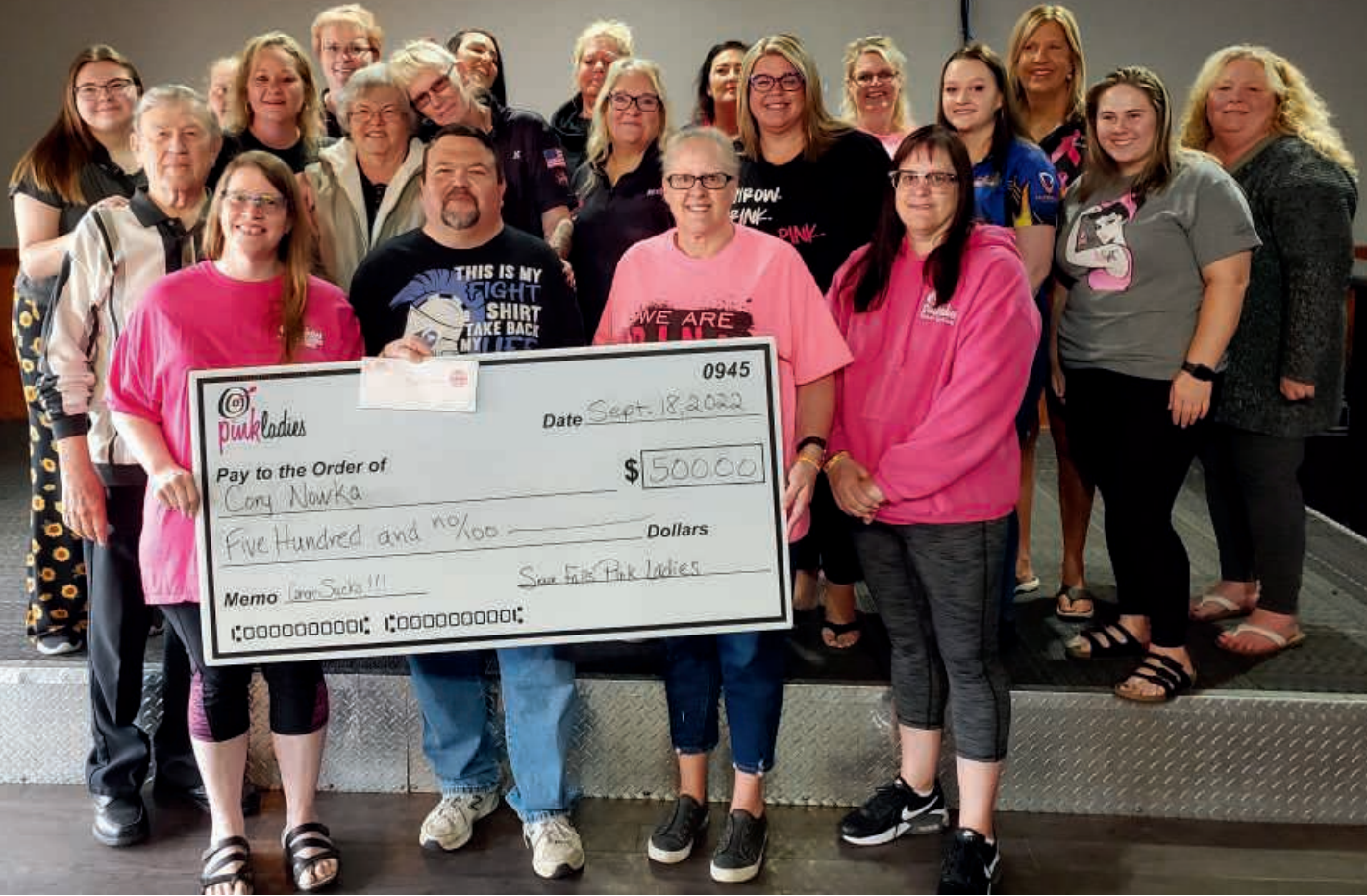
3. Price of moving the house
4. Distance of the move
5. Cost of the new lot
6. Cost to purchase the house or building
7. Fees associated with moving overhead utilities, tree trimming, and any permits or inspections required to move and place the house
8. Fees associated with disconnecting all of the current utilities, HVAC, and electrical and plumbing systems
9. Remodeling costs
10. Financing costs

Moving a structure can be an exciting process if done correctly. It’s saving a piece of history from destruction or putting in something new without the headache of waiting. Whatever the reason behind the move, the ability to do it is astounding. Homes can be saved, history can be preserved, and future options are made more available.



A home is moved due to flooding near Waubay, S.D.

DART LEAGUE



Members of the Sioux Falls Pink Ladies Dart League present a \$500 check to area residents fighting cancer.

PINK LADIES DART LEAGUE Looking to Make a Difference

Frank Turner
frank.turner@sirea.coop

Clad in pink, one nonprofit organization in Sioux Falls is making a difference in their community one dart at a time. The Sioux Falls Pink Ladies Dart League, alongside other Pink Ladies chapters in South Dakota, has a goal to support and raise funds for area community members who are battling cancer and undergoing

treatment.

Although the Pink Ladies Dart League is mostly noncompetitive when it comes to darts, the group is serious in its efforts to assist those fighting cancer. Funds raised by the ladies through league darts and public events regularly help embattled families during their fight with cancer, easing the financial burden of hospital bills, food expenses, gas money or anything else the family might need.

Despite having only 60 members in their chapter, the Sioux Falls Pink Ladies Dart League has significantly impacted their community in the last decade. Through community events, tournaments and league fees, the group has collectively donated more





Even Santa sometimes visits the Sioux Falls Pink Ladies Dart League, gifting presents to families battling cancer.



Sioux Falls Pink Ladies Dart League Logo

than \$130,000 to those impacted by cancer.

“It’s about giving back to our community and giving love and support to cancer patients,” said Sioux Falls Pink Ladies Dart League President Leann Gabel.

When Gabel joined her chapter in 2015, she had no previous experience throwing darts. For her, it was about trying something new, having fun and making a difference.

“It’s about the hearts, not the darts.”

Every year, Pink Ladies chapters from across the state gather in October during cancer awareness month for the Pink Ladies Darts Tournament. Although the sport is a significant component of the Pink Ladies, Gabel emphasized that their goal is about supporting their community. Anyone,

regardless of gender, age or skill, is welcome to join their chapter.

“I came into the chapter never having thrown a dart in my life and I’m still in the lower division when we play tournaments,” said Gabel. “It’s about the hearts, not the darts.”

For Gabel and the rest of the chapter, each donation serves as a reminder of why they participate in the non-profit. Gabel recalled helping a family with five children during Christmas time in 2021.

The dad was struggling with cancer, and while supporting the father and the family, the mother was unable to work. When the family attended one of the chapter’s events, the group gave the family an abundance of gifts, a Hy-vee gift card and cash for the holidays.

“They were so grateful and they started crying and I couldn’t help but cry too,” she said. “I just thought, wow, my heart is full right now. It doesn’t get any better than that, and

with the kind of passion we have in our chapter, you just can’t beat it.”

Charity from The Pink Ladies Darts League goes beyond just the holiday season. The chapter regularly holds fundraising events and supports area families throughout the year. In fact, the chapter’s next benefit event, Kickin’ Cancer Jam, will take place this month on April 16 at the El Riad Shrine in Sioux Falls. The event will feature five different bands and, of course, a dart tournament. All proceeds from the event will go to local families from the Sioux Falls area.

The Sioux Falls Pink Ladies League, however, is not alone in its efforts. Gabel also encouraged people to watch for events around the state and support the Pink Ladies in their mission to support those with cancer.

“People are more than welcome to attend our Kickin’ Cancer Jam,” she said. “It’s all for the community. No one should fight alone.”



April 22, 2023
RiverRat Run
 Gavins Point Recreation Area
 Yankton, SD
 605-660-9483

To have your event listed on this page, send complete information, including date, event, place and contact to your local electric cooperative. Include your name, address and daytime telephone number. Information must be submitted at least eight weeks prior to your event. Please call ahead to confirm date, time and location of event.

MARCH 31-APRIL 2
70th Annual Hayes Play: Trouble in Tumbleweed
 Hayes Community Hall
 Hayes, SD
 605-280-6556

APRIL 1
Hill City Easter Egg Hunt
 9:45 a.m.
 Visitor Information Center
 Hill City, SD
 605-574-2368

APRIL 1
Lion's Club Easter Egg Hunt
 10 a.m.
 City Park
 Groton, SD
 605-397-8422

APRIL 1
East Dakota Chapter NWTf 30th Banquet
 Sioux Falls, SD
 605-940-0702

APRIL 2-4
"The Psychic-a Murder Mystery of Sorts" Community Theater Performance
 Town Players Theater
 Watertown, SD
 605-280-6556

APRIL 8
East Dakota Chapter NWTf 30th Banquet
 Sioux Falls, SD
 605-940-0702

APRIL 8
Easter Egg Hunt for Helping with Horsepower
 2 p.m.
 Reclamation Ranch
 Mitchell, SD

APRIL 21
Museum After Dark
 7 p.m.
 Children's Museum of South Dakota
 Brookings, SD

APRIL 21-22
Junkin' Market Days, Spring Market
 W.H. Lyon Fairgrounds
 Expo Building
 Sioux Falls, SD
 605-941-4958

APRIL 22
RiverRat Run
 8 a.m.
 Gavins Point Recreation Area
 Yankton, SD
 (605) 660-9483

MAY 6
Cinco de Mayo Fiesta
 Lake Farley Park
 Milbank, SD
 605-432-6656

MAY 17
Norwegian Independence Day
 6 p.m.
 Vivian, SD
 605-222-3296

MAY 20
Buggy Museum Open House
 10 a.m.
 Stockholm, SD
 605-938-4192

MAY 25
Wine Walk
 5 p.m.
 Downtown Businesses
 Aberdeen, SD
 605-226-3441

MAY 27
Back When They Bucked All-Day Rodeo
 9 a.m.
 Days of '76 Event Complex
 Deadwood, SD
 605-717-7642

Note: Please make sure to call ahead to verify the event is still being held.